



金德国际建筑设计及技术顾问有限公司

GUENTER INTERNATIONAL BUILDING DESIGN & TECHNOLOGY CONSULTANTS LTD.

项目分析

project analysis

土地规划

land planning

城市设计

urban design

建筑设计

architecture

香港
广州

九龙尖沙咀科学馆道14号新文华中心A座9楼917室 +852 27935511
中国广州市海珠区艺苑路东庆街2号7楼 +86 (0)20 34303369

Hong Kong

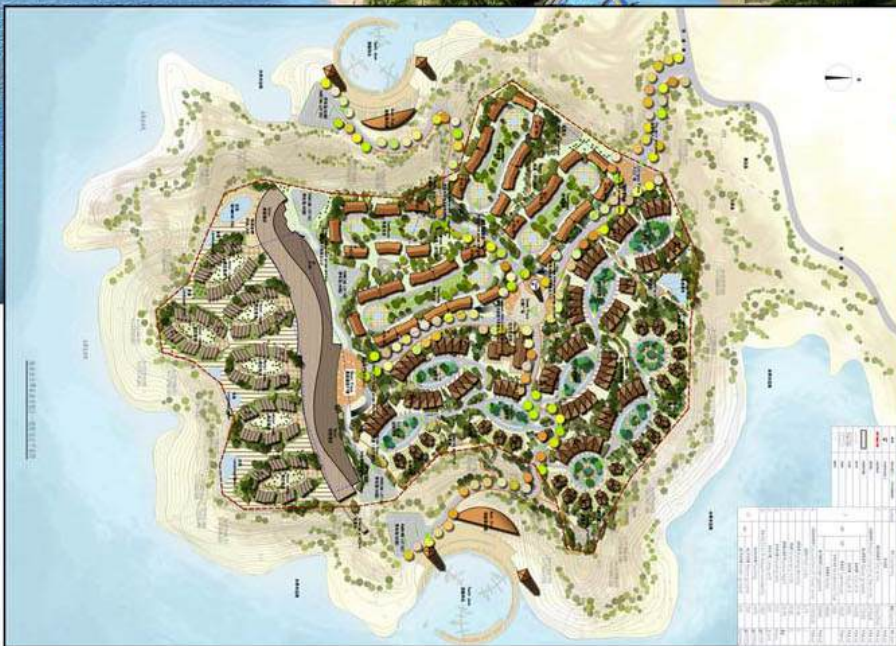
Tower A Unit 17, 9thF, New Mandarin Plaza No. 14
Museum Road TsimShaTsui Kowloon +852 27935511

Guangzhou

DongQing Street 2, 7thF, YiYuan Road
Haizhu District, +86 (0)20 34303369

eger@archetmedia.de +86 13418009834
www.brambilla.de & www.archetmedia.de

海南加乐潭旅游度假区一期建设项目 HAINAN JIALE TAN LVYOU DUJIAQU YIQI JIANSHE XIANGMU
 “盛威半岛”概念规划及建筑设计方案 SHEGNWEI BANDAO GAINIAN GUIHUA JI JIANZHU SHEJI FANG'AN



功能分区

zoning

本设计按照建筑功能的分区，划分为三个区域：

- 情景洋房区
- 酒店式公寓区
- 星级酒店区

并且在东北、西南两侧沿水分别设计了两个游艇码头。



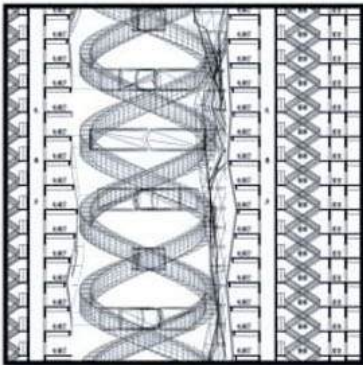
半岛瞰酒店效果图





DONGGUAN INTERNATIONAL HEALTH CITY
HEALTH MANAGEMENT CENTER
ARCHITECTURAL DESIGN PROPOSAL

东莞国际健康产业城
“健康管理中心”建筑设计方案



DNA螺旋作为东莞健康城的标志

除了功能要求以外，本设计反映和传达了一个特殊理念。新的治疗时代的来临，它提供多种广泛的治疗方法，除了为客户身体消除病痛，促进健康，还给心灵上给予关怀。同时包含两种治疗方向，就是西方现代的治疗方法结合中国传统的整体治疗方法。

The DNA Helix as a symbol for the new Health City in Dongguan

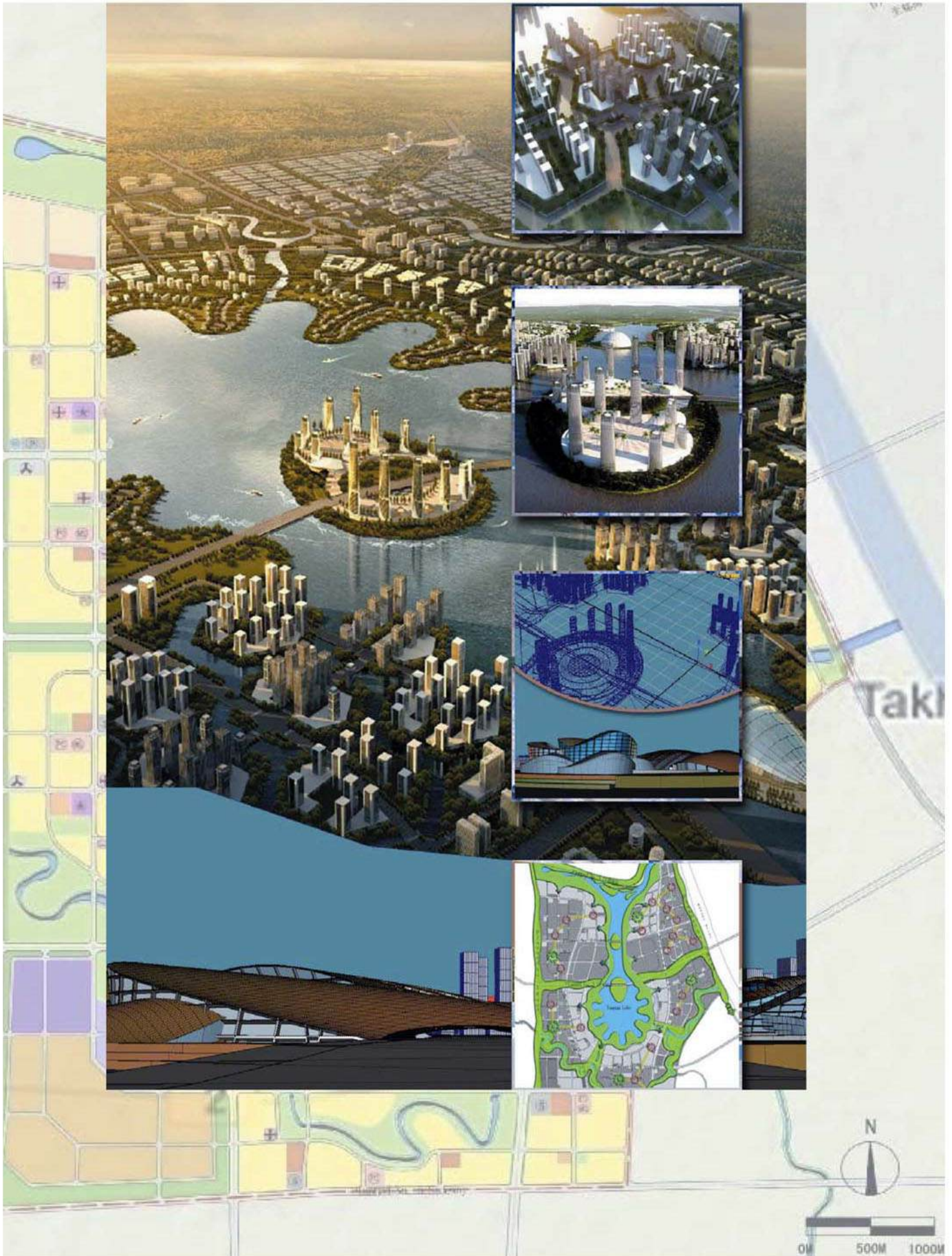
Beside the functional requirements, the architecture for the new Health City should also reflect and transport the meaning of the special ideas for this city. An era for a new medicine, which offers a broad range of different medical approaches, caring, solving and improving both, body and soul for their clients. Convenience, Wellness, SPA and the two main directions of medicine, the modern effective western medicine, combined with the holistic Chinese Traditional medicine.

Three Pearls Oasis city Al Ain

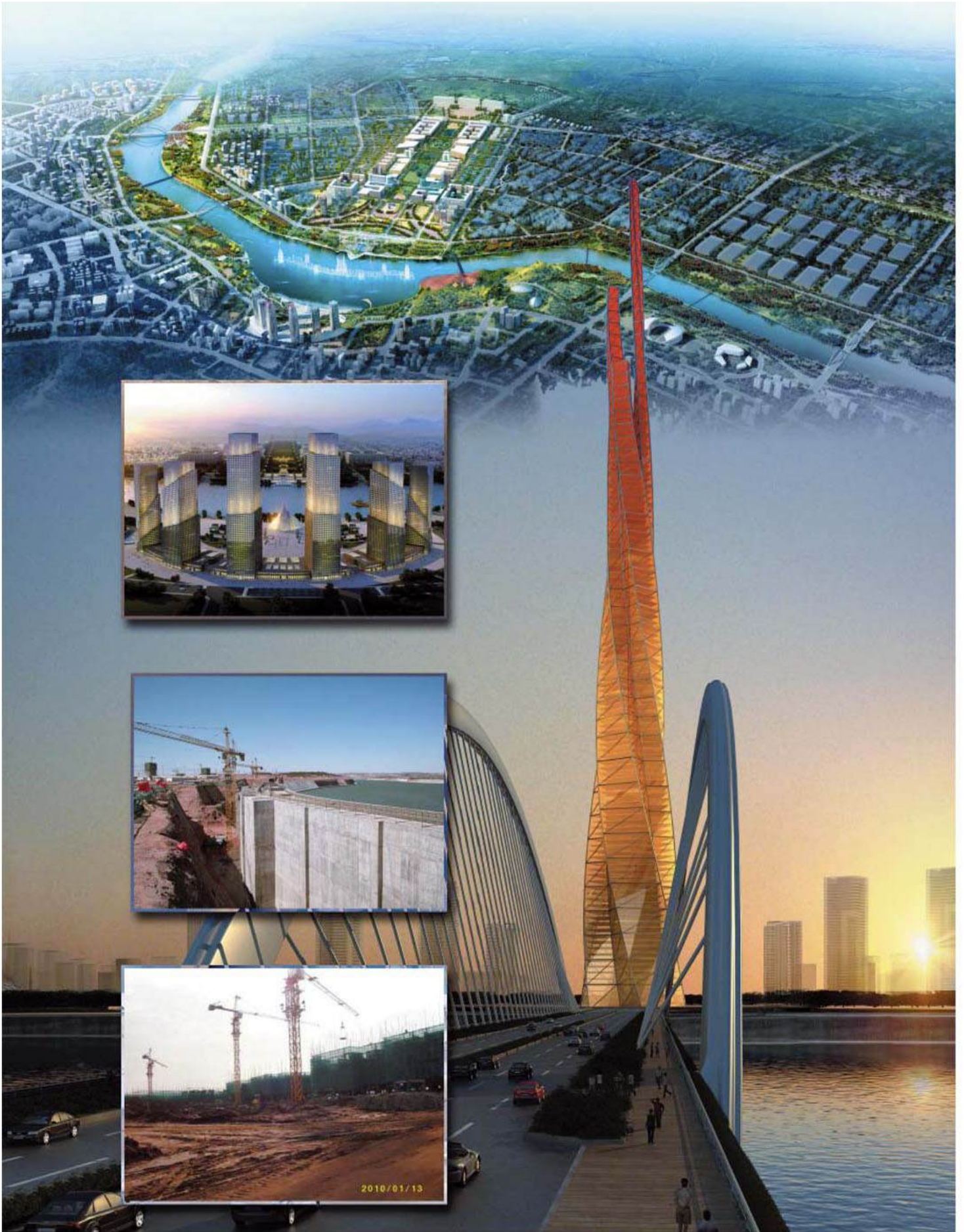


LEGEND

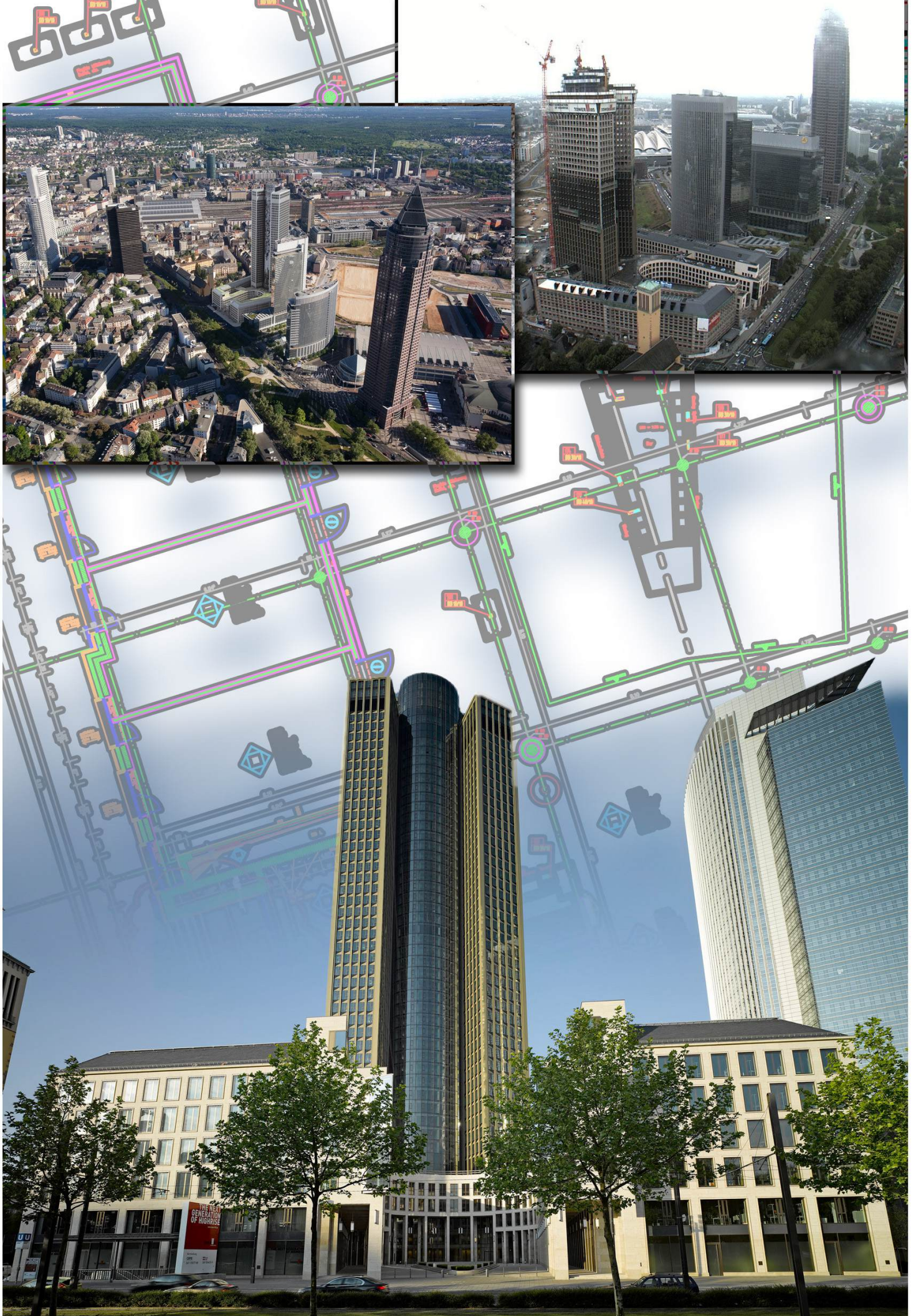
	COMMERCIAL VILLAS		OFFICES		SCHOOL for UAE nat. KG+cycle 1		SPORTS CENTER
	EMIRATI VILLAS		MOSQUE TYPE A		KINDERGARTEN for expat.		URBAN FARMING
	EMIRATI APARTMENTS		HEALTHCARE CLINICS		KINDERGARTEN for UAE nat.		NEIGHBORHOOD PARK
	RETAIL		WOMENS DEVELOPMENT CENTER		DAYCARE CENTRE		FAREEJ OPEN SPACE



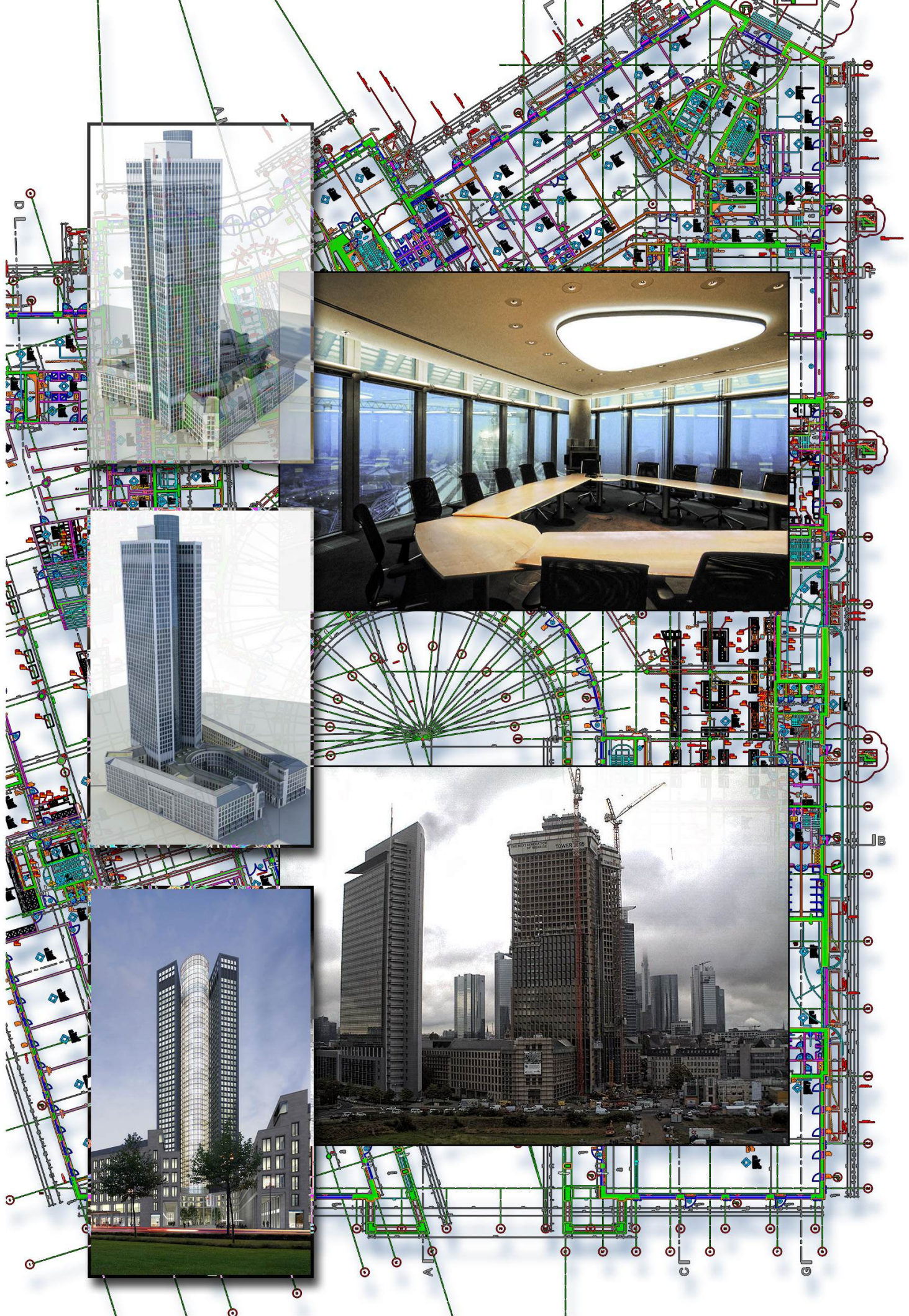
2009 - URBAN MASTER PLAN FOR THE ENLARGEMENT OF PHNOM PENH, CAMBODIA



2008 - URBAN MASTER PLAN ORDOS DONGSHENG, INNER MONGOLIA, P. R. CHINA



BIM CAD-MODEL - TOWER 185 FRANKFURT, GERMANY 2006-2011

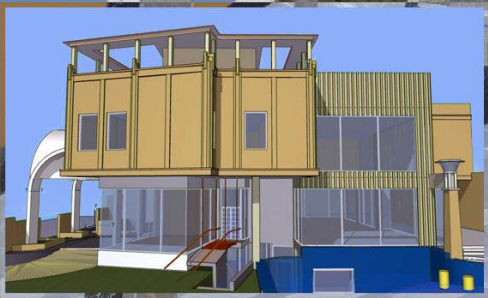
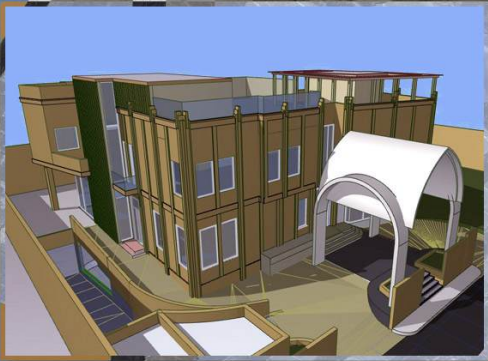


BIM CAD-MODEL - TOWER 185 FRANKFURT, GERMANY 2006-2011

Wohnviertel Buchenkamp Volksdorf 32, Hamburg Architekturbüro Tonon, Berlin



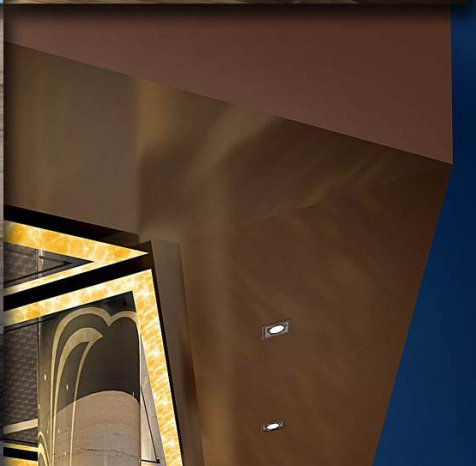
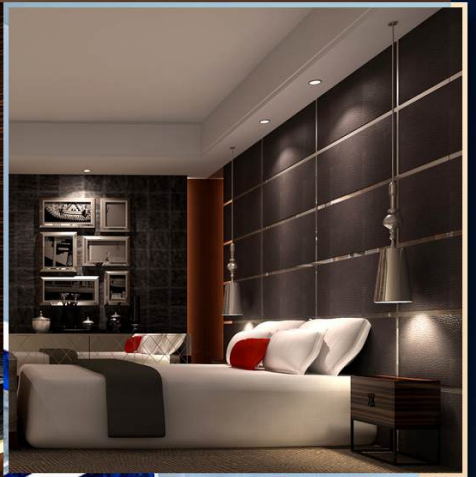
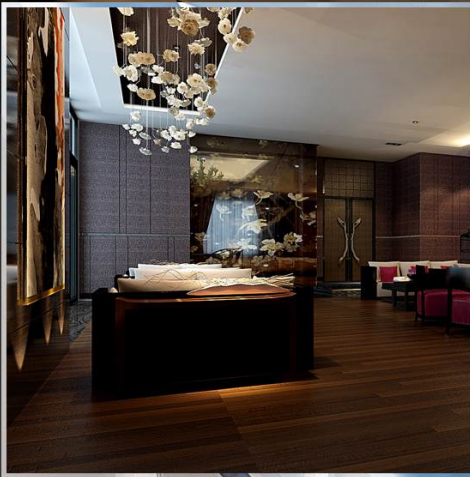
Nutzung: 317 Wohneinheiten, 22.700 m² Wohnfläche
Bauherren: GAGFAH Group, Walddörfer WBG, Post Immobilienges.
Wettbewerb: 1990 Bauphase: 1994 - 1998
Architekturpreis der Stadt Hamburg
Entwurf und Projektleitung Leistungsphasen 1-5



VILLA YAMANI, JEDDAH, SAUDI ARABIA 2012-13



VILLA YAMANI, JEDDAH, SAUDI ARABIA 2012-13



HOTEL

重庆伊可莎大酒店设计
INTERIOR DESIGN FOR EXCEL HOTEL OF CHONGQING

22层豪华套房效果图